

# Governing Nuclear Waste in the Long-Term: On the Role of Place

Melanie Mbah, Sophie Kuppler  
RGS-IBG Annual International Conference,  
Session: Geographies of Nuclear Energy

Online, 03.09.2021



# Outline

1. Introduction – why place-sensitive long-term governance?
2. Theoretical approaches to place-sensitive long-term governance
3. Phases in place-sensitive long-term governance
4. Empirical design for understanding place-attachment better
5. Outlook / Research needs

# 1. Introduction – why place-sensitive long-term governance? I

- Nuclear wastes need to be safely stored or disposed for extremely long time spans
- Siting is already a highly controversial and long-term task
- Our example: Germany
  - First attempt at siting in the late 1970s was accompanied by decades of protests (cf. Hocke/Kallenbach 2015)
  - New site selection process was decided upon in 2013, siting is envisaged for 2031 (StandAG 2017)
  - Some estimate that site selection, approval and construction will take about 100 years (cf. Thomauske/Kudla 2016)
  - Retrievability of the waste needs to be ensured for 500 years after emplacement

# 1. Introduction – why place-sensitive long-term governance? II

Complex disposal system, consisting of:

- different phases and steps over long time spans

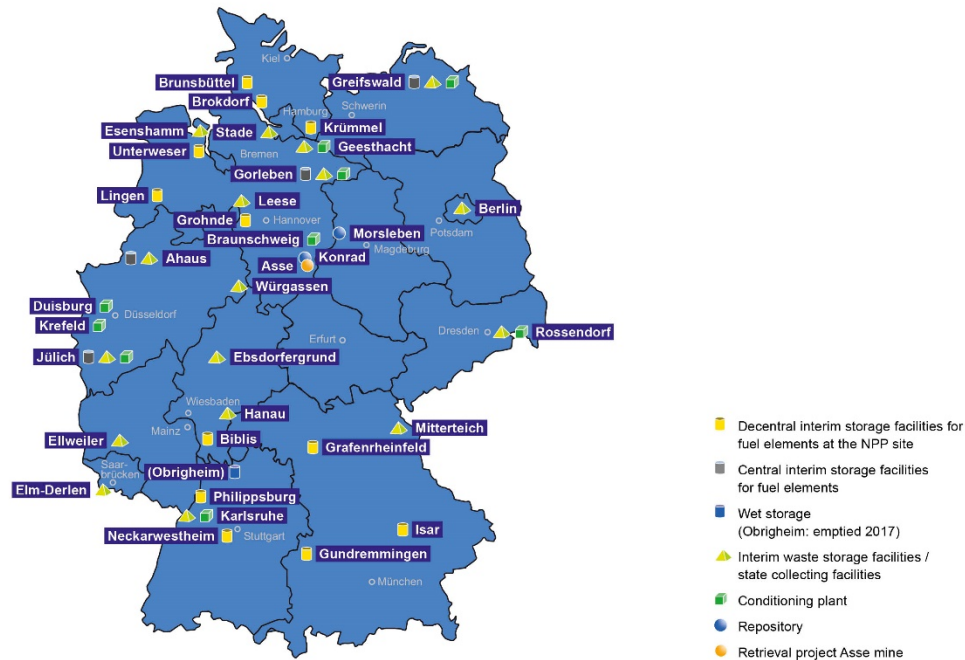


- in several places and with different effects
- many different actors involved and directly or indirectly affected now and in the future

# 1. Introduction – why place-sensitive long-term governance? III

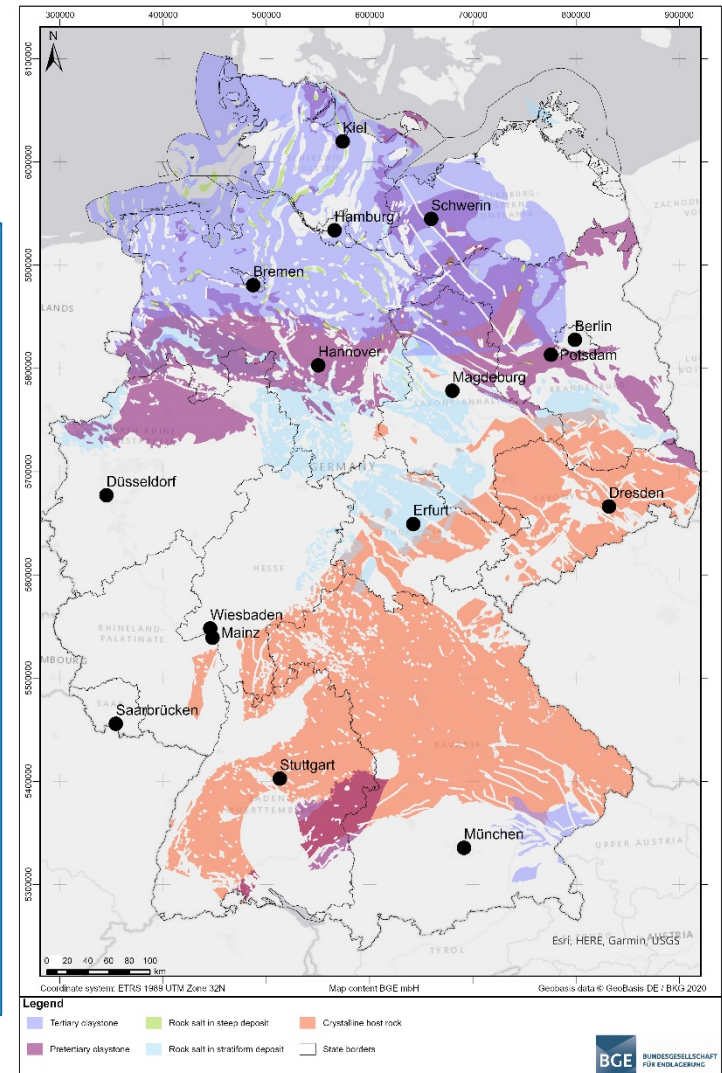
Several places are already affected, some will be affected in the near and far future

Radioactive waste management facilities in Germany



SOURCE: ÖKO-INSTITUT, 2018

Sub-areas pursuant to § 13 Site Selection Act (StandAG)



# 1. Introduction – why place-sensitive long-term governance? IV

- Infrastructures cause long-term spatial change
- In addition, many context factors of nuclear disposal might change over time, e.g.
  - Preferences regarding public participation
  - Understandings of what is considered safe
  - Local acceptance or resistance towards a site
- Need for place-sensitive long-term governance, which is flexible and adjustable to different contexts and finds a balance between local needs and societal responsibility for safe disposal

## 2. Theoretical approaches to place-sensitive long-term governance II

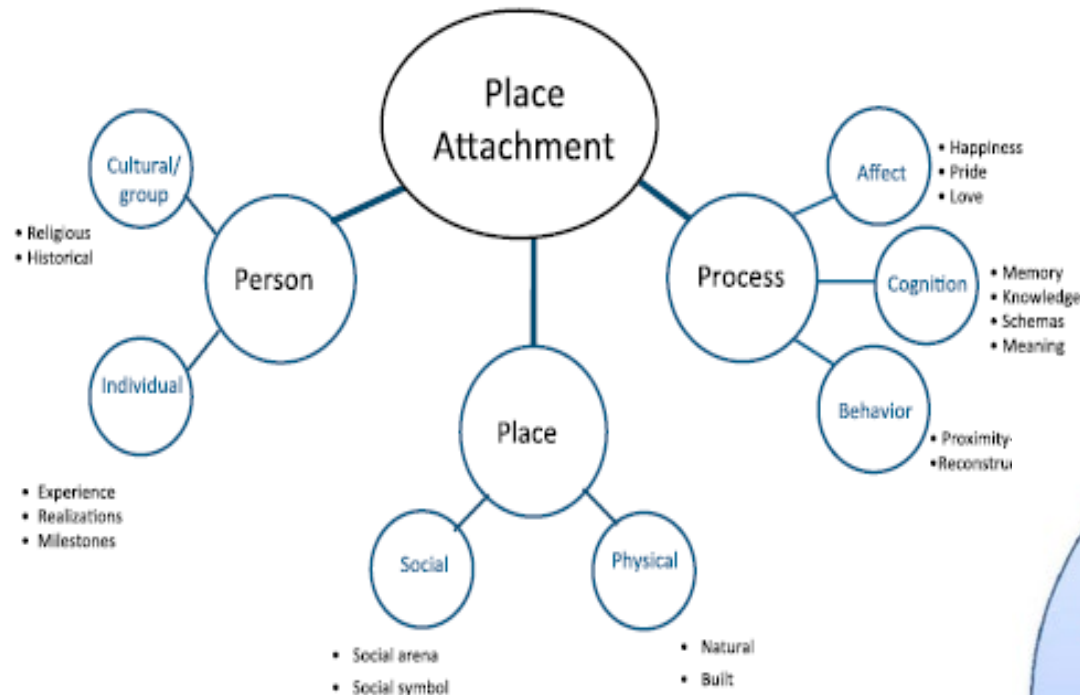
Long-term Governance (Kuppler & Hocke 2019):

- Who can take decisions oriented at public welfare a few hundred years from now?
- How to ensure knowledge transfer?

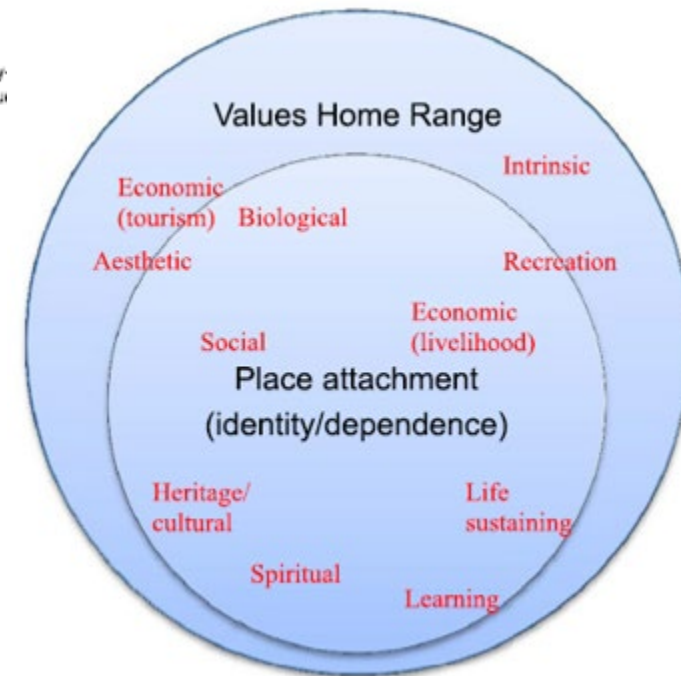
Long-term governance (LTG) as an approach for discussing institutionalisation processes within fields of technology that have (potentially averse) long-term effects



## 2. Theoretical approaches to place-sensitive long-term governance I



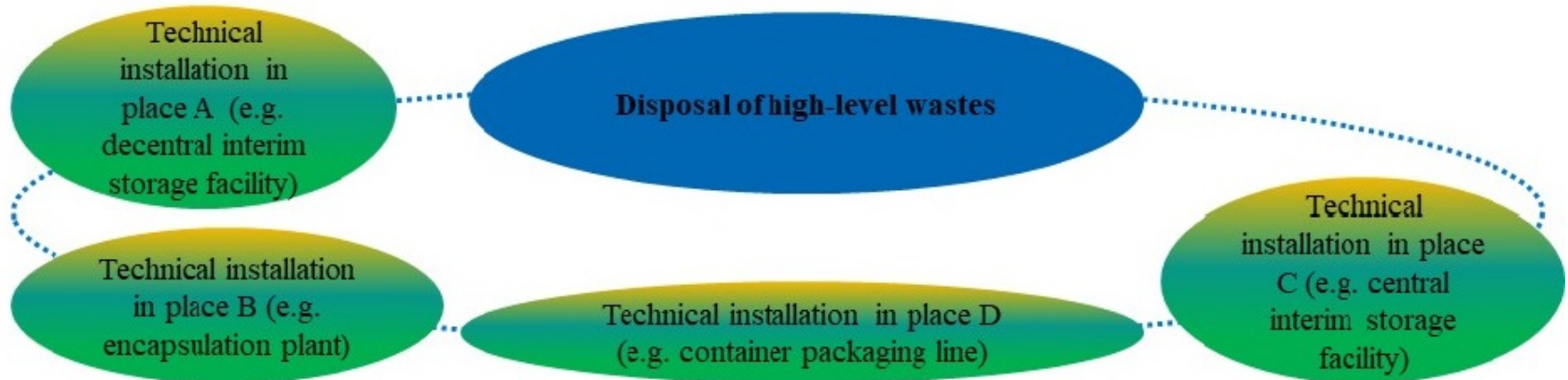
Source: Brown et al. 2015, p. 44.



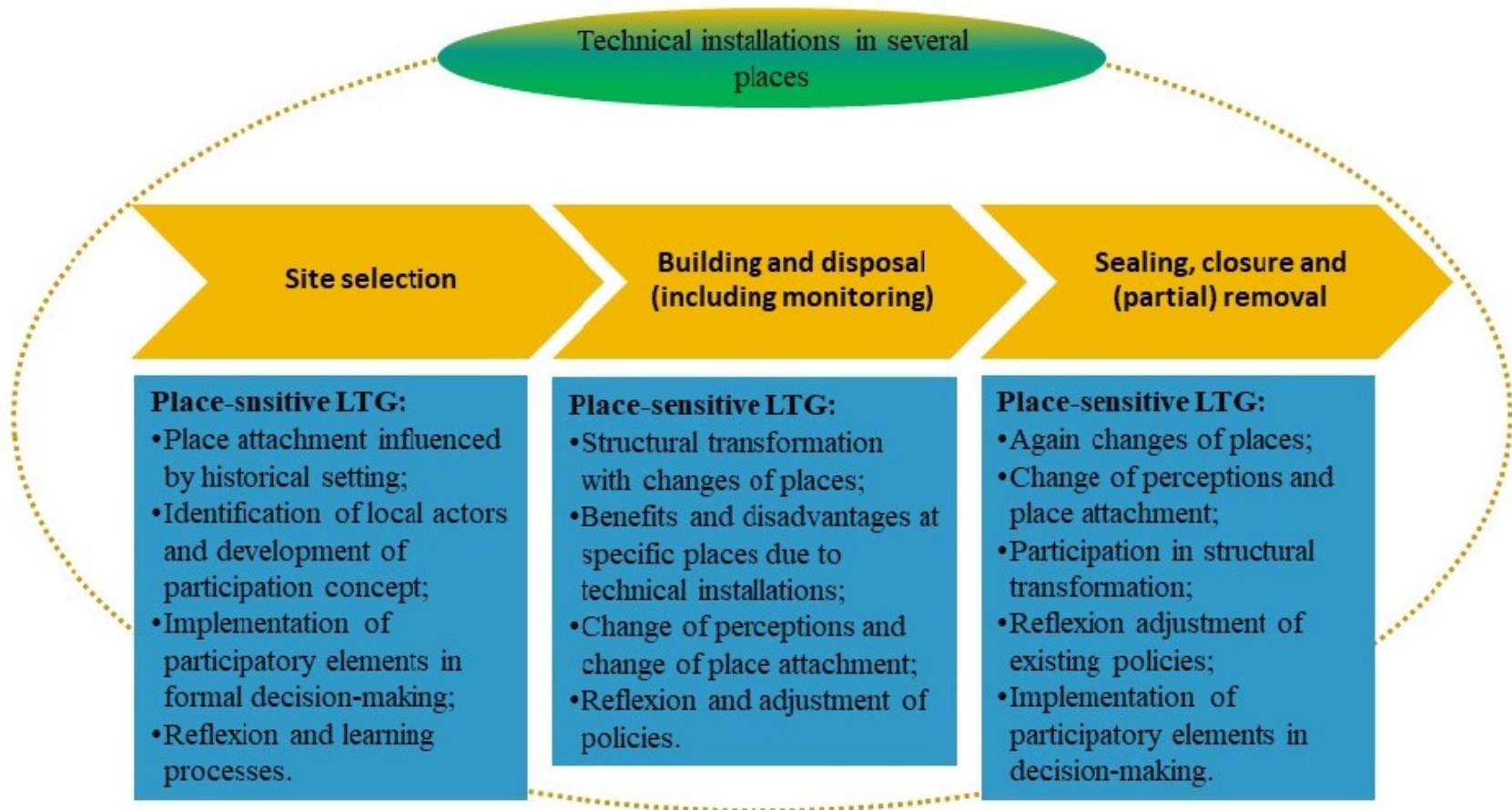
Source: Scannell & Gifford 2010, p. 2.



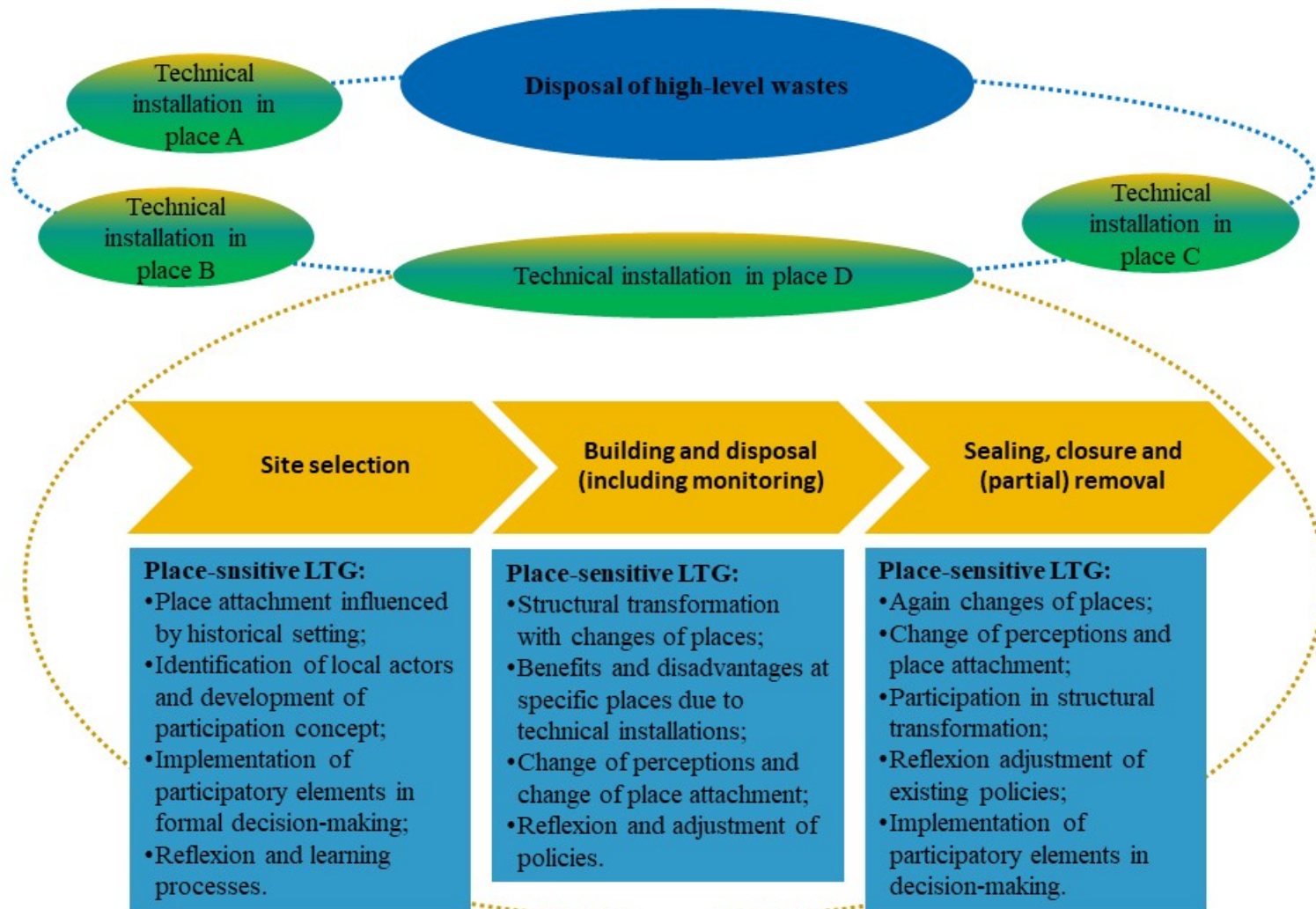
### 3. Phases in place-sensitive long-term governance



### 3. Phases in place-sensitive long-term governance



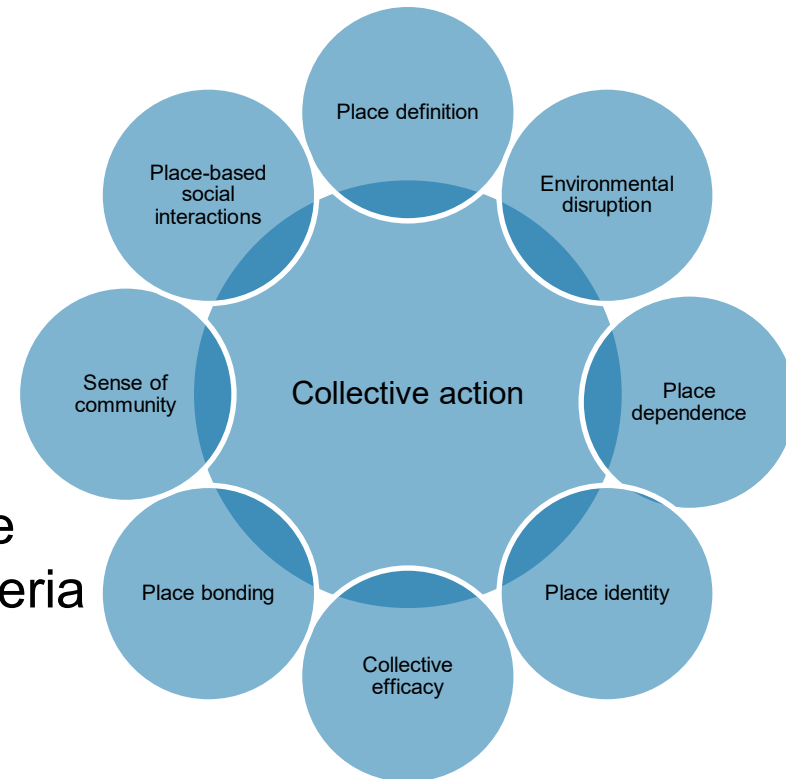
### 3. Phases in place-sensitive long-term governance



Source: Translated depiction of Mbah & Kuppler 2021, p. 434.

## 4. Empirical design for understanding place attachment better

- Research aim: analysis of effects of place attachment in spatial transformations (cf. Mihaylof & Perkins 2014)
  - Method:
    - Visualization of possible spatial transformations by disposal facility and associated technical installations
    - Analysis of place attachment in three regions in Germany (selected by criteria e.g. cultural bonds, structural transformation experience)
- interviews, workshops, questionnaires, visual psychological experiment



## 5. Outlook / Research needs

- Enhance empirical basis for long-term governance
- Link empirical findings on place-attachment to long-term governance by integrating
  - various place attachments depending on context and actors needs
  - different needs regarding participation (consultation and collaboration (of experts, stakeholders and public) with different methods and formats at different points of time in the long-term governance process)
- Investigate further needs regarding linkages between participatory elements and decision-making (design of interfaces)



# References

- Brown, G.; Raymond, C.M.; Corcoran, J. (2015): Mapping and Measuring place attachment. In: *Applied Geography* 57: 42-53.
- Hocke, Peter; Kallenbach-Herbert, Beate (2015): Always the Same Old Story? Nuclear Waste Governance in Germany. In: Achim Brunnengräber, Lutz Mez, Di Nucci, M. Rosaria und Miranda Schreurs (Hg.): *Nuclear Waste Governance. An International Comparison*. Wiesbaden: Springer VS, S. 177–201.
- Kuppler, S.; Hocke, P. (2019): The role of long-term planning in nuclear waste governance. In: *Journal of Risk Research* 22 (11): 1343-1356.
- Mbah, M.; Kuppler, S. (2021): Raumsensible Long-term Governance zur Bewältigung komplexer Langzeitaufgaben. Anforderungen im deutschen Entsorgungskontext. In: Brohmann, B. et al. (Hg): *Robuste Langzeit-Governance bei der Endlagersuche. Soziotechnische Herausforderungen im Umgang mit hochradioaktiven Abfällen*. Bielefeld: Transcript; S. 413-446.
- Mihaylov, N.; Perkins, D.D. (2014): Community Place Attachment and its Role in Social Capital Development. In L. C. Manzo, & P. Devine-Wright, *Place Attachment, Advances in Theory, Methods and Applications*. Oxfordshire: Routledge; S. 61-74.
- Scannell, L.; Gifford, R. (2010): Defining place attachment: A tripartite organizing framework . In: *Journal of Environmental Psychology* 30: 1-10.
- StandAG (2017): Deutscher Bundestag. Entwurf eines Gesetzes zur Fortentwicklung des Gesetzes zur Suche und Auswahl eines Standortes für ein Endlager für Wärme entwickelnde radioaktive Abfälle und anderer Gesetze, StandAG (Drucksache 18/11398).
- Thomauske, B.; Kudla, W. (2016): Zeitbedarf für das Standortauswahlverfahren und für die Errichtung eines Endlagers (K-Drs. 267). Kommission Lagerung hoch radioaktiver Abfallstoffe (Hg.), 2016.

# Thank you for your attention!

[m.mbah@oeko.de](mailto:m.mbah@oeko.de)

[sophie.kuppler@kit.edu](mailto:sophie.kuppler@kit.edu)